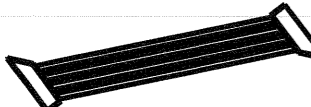


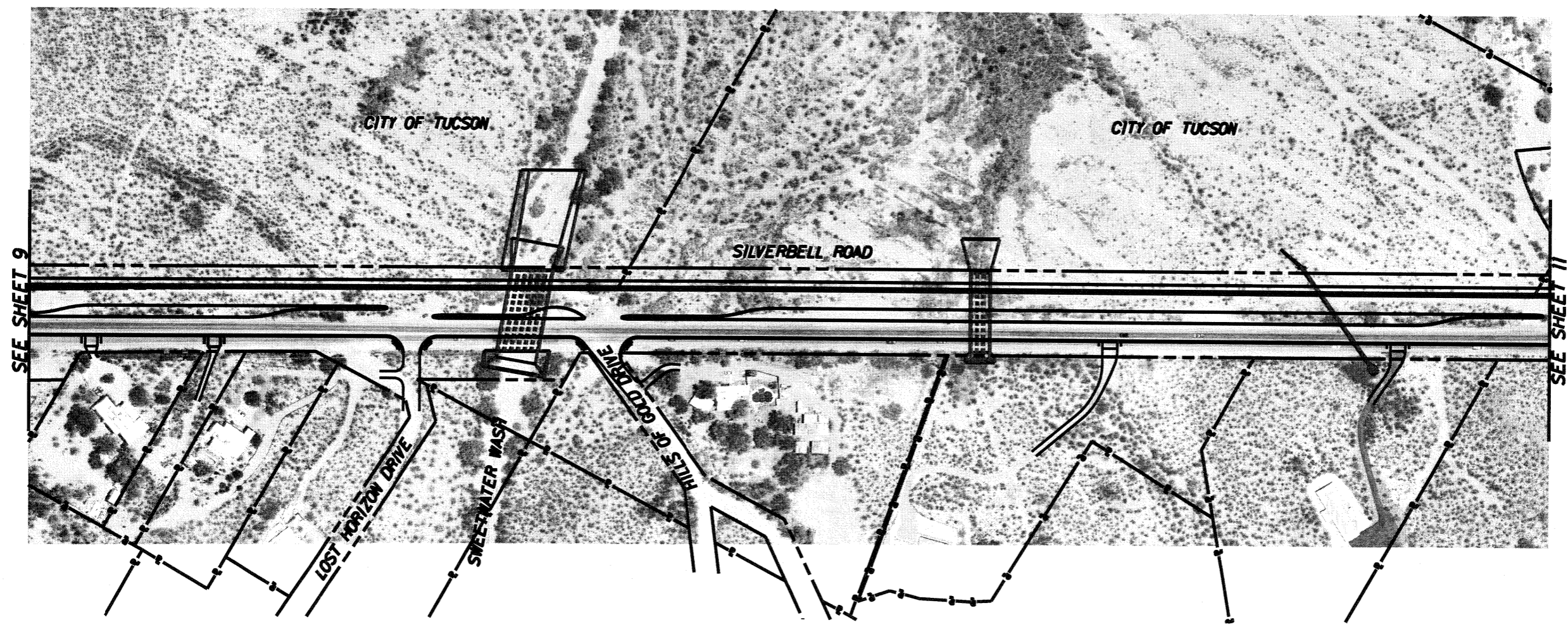
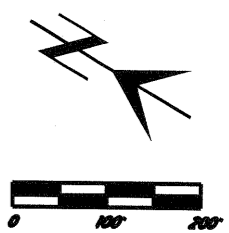
- LEGEND**
- Right of Way
 - Property Line
 - Curb Line/Median
 -  Drainage Structure


2/22/2010
 H:\profile\9589 - Silverbell Road DCR\Public Outreach\Public Sheets\9.42.24 AN\svb-pr-09.dgn

K Kittelson & Associates, Inc.
 33 N. Stone Ave., Suite 800
 Tucson, AZ 85701 (520) 544-4067

NO.	DATE	REVISION	BY	CHKD.	APPR.

PRELIMINARY REVIEW NOT FOR CONSTRUCTION OR RECORDING	ALIGNMENT, ACCESS AND DRAINAGE CROSSINGS		DEPARTMENT OF TRANSPORTATION/ENGINEERING DIVISION	9 OF 17
	SILVERBELL ROAD IMPROVEMNTS INA ROAD TO GRANT ROAD		REF. _____	SCALE: 1" = 100'
	DRWN. BY _____	DESIGN. BY _____	CHKD. BY _____	PLAN NO. _____



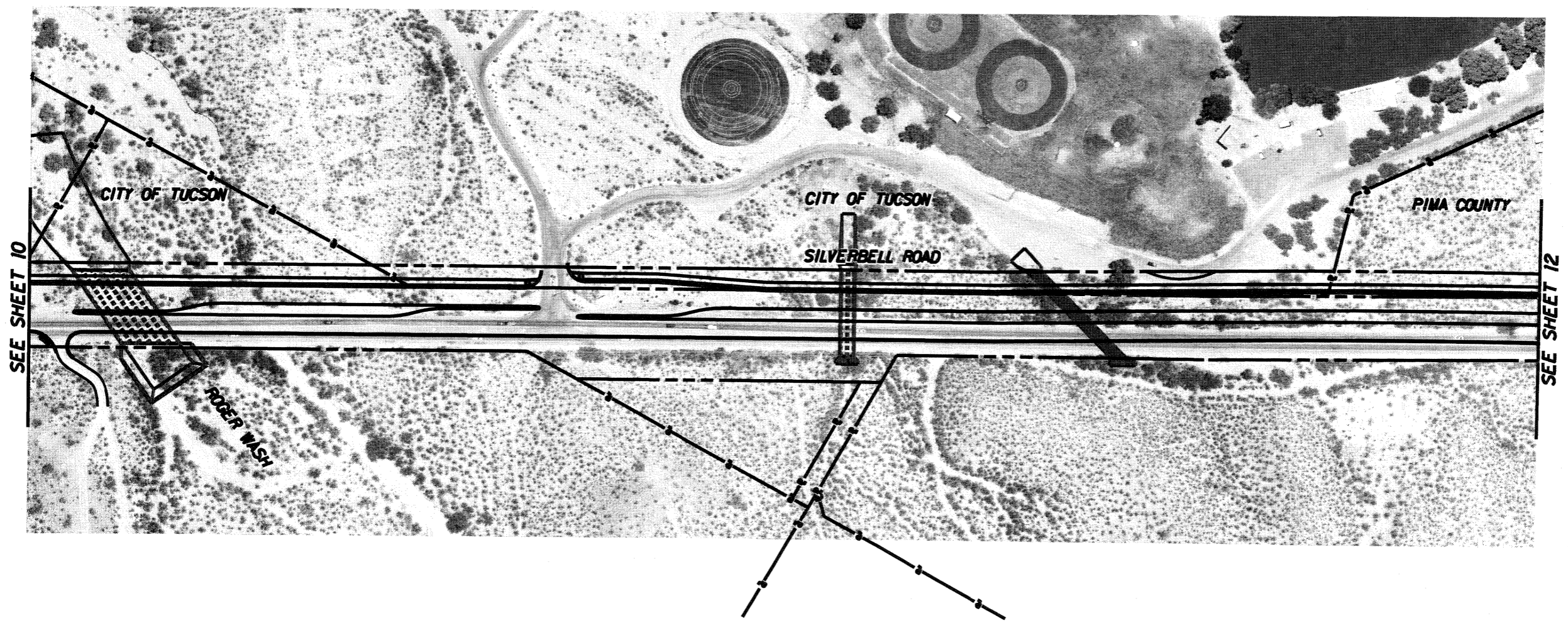
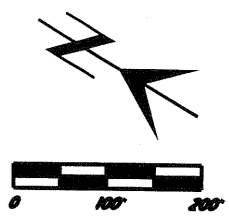
- LEGEND**
- Right of Way
 - |-|-|- Property Line
 - ==== Curb Line/Median
 -  Drainage Structure





ALIGNMENT, ACCESS AND DRAINAGE CROSSINGS

PRELIMINARY REVIEW NOT FOR CONSTRUCTION OR RECORDING	DEPARTMENT OF TRANSPORTATION/ENGINEERING DIVISION		10
	SILVERBELL ROAD IMPROVEMENTS INA ROAD TO GRANT ROAD		DF 17
	DRWN. BY	REF.	SCALE: 1" = 100'
DSGN. BY	PLAN NO.		
CHKD. BY			

K Kittelson & Associates, Inc.
33 N. Stone Ave., Suite 800
Tucson, AZ 85701 (520) 544-4067

NO.	DATE	REVISION	BY	CHKD.	APPR.



- LEGEND**
-  Right of Way
 -  Property Line
 -  Curb Line/Median
 -  Drainage Structure

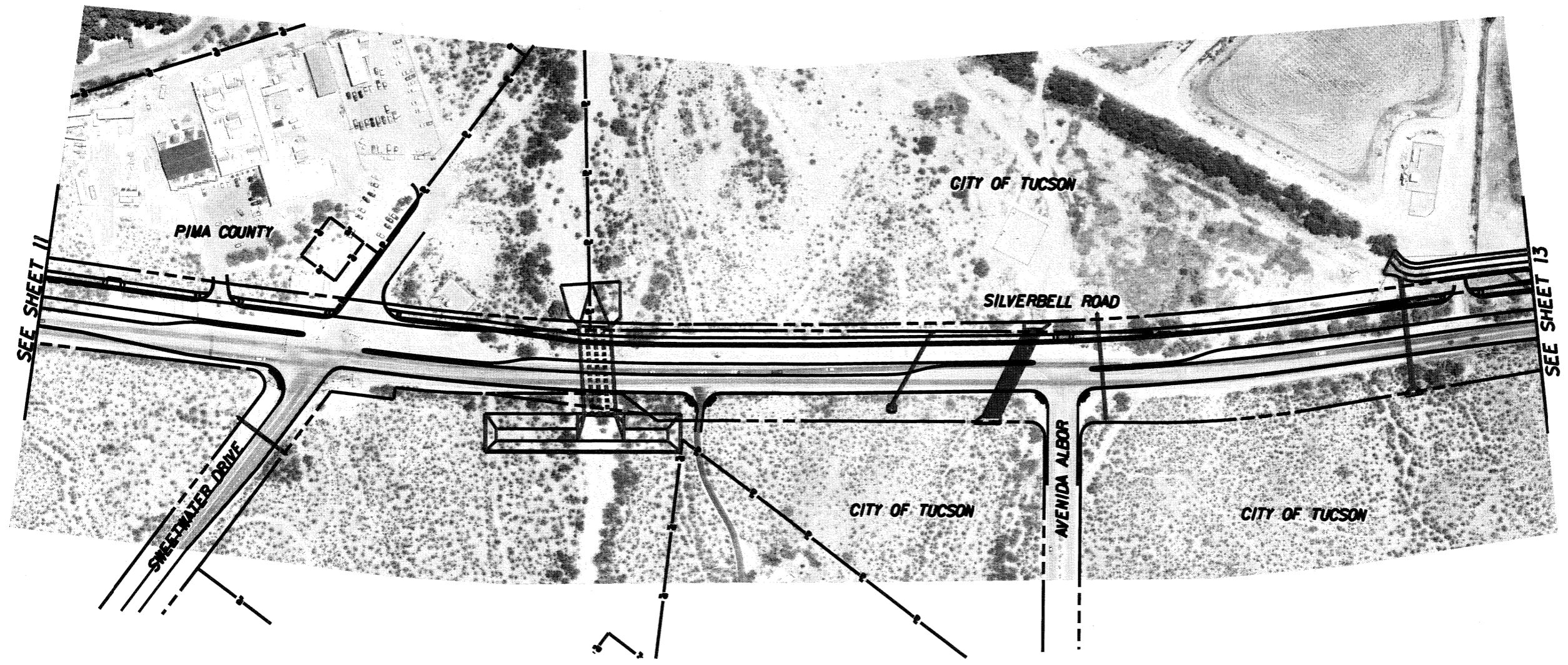
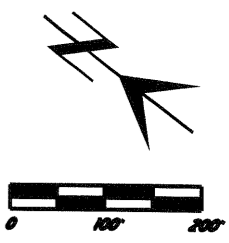
2/22/2010
 H:\projfile\9589 - Silverbell Road DCR\Public Outreach\Public Sheets\9.42.24 AM\svb-pr-11.dgn


K Kittelson & Associates, Inc.
 33 N. Stone Ave., Suite 800
 Tucson, AZ 85701 (520) 544-4067

NO.	DATE	REVISION	BY	CHKD.	APPR.

PRELIMINARY REVIEW NOT FOR CONSTRUCTION OR RECORDING	ALIGNMENT, ACCESS AND DRAINAGE CROSSINGS	
	DEPARTMENT OF TRANSPORTATION/ENGINEERING DIVISION	
	SILVERBELL ROAD IMPROVEMNTS INA ROAD TO GRANT ROAD	
DRWN. BY		REF. _____ SCALE: 1" = 100'
DSGN. BY		
CHKD. BY		PLAN NO. _____

11
OF
17



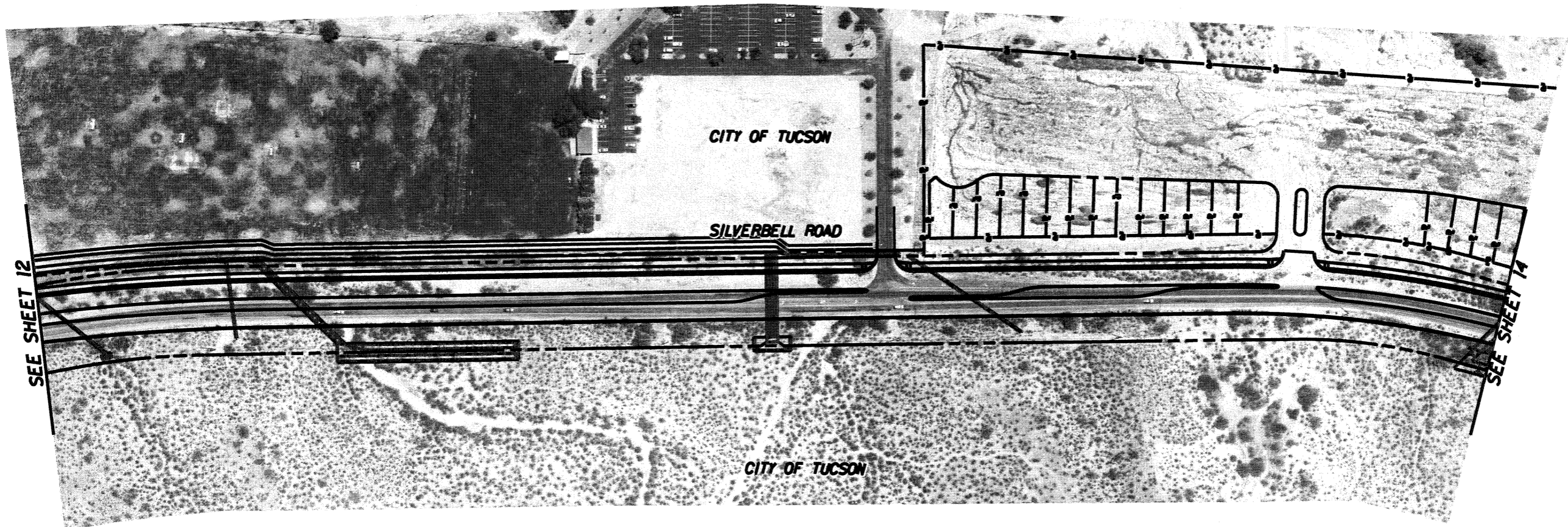
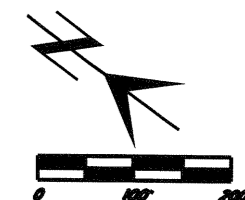
- LEGEND**
- Right of Way
 - |-|-|- Property Line
 - ==== Curb Line/Median
 -  Drainage Structure

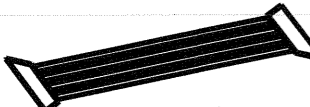
2/22/2010
 H:\projfile\9589 - Silverbell Road DCR\Public Outreach\Public Sheets\9.42.24 AM\svb-pr-12.dgn

K Kittelson & Associates, Inc.
 33 N. Stone Ave., Suite 800
 Tucson, AZ 85701 (520) 544-4067

NO.	DATE	REVISION	BY	CHKD.	APPR.

PRELIMINARY REVIEW NOT FOR CONSTRUCTION OR RECORDING	DEPARTMENT OF TRANSPORTATION/ENGINEERING DIVISION		12
	SILVERBELL ROAD IMPROVEMENTS INA ROAD TO GRANT ROAD		OF 17
	DRWN. BY	REF.	SCALE: 1" = 100'
DSGN. BY	PLAN NO.		
CHKD. BY			



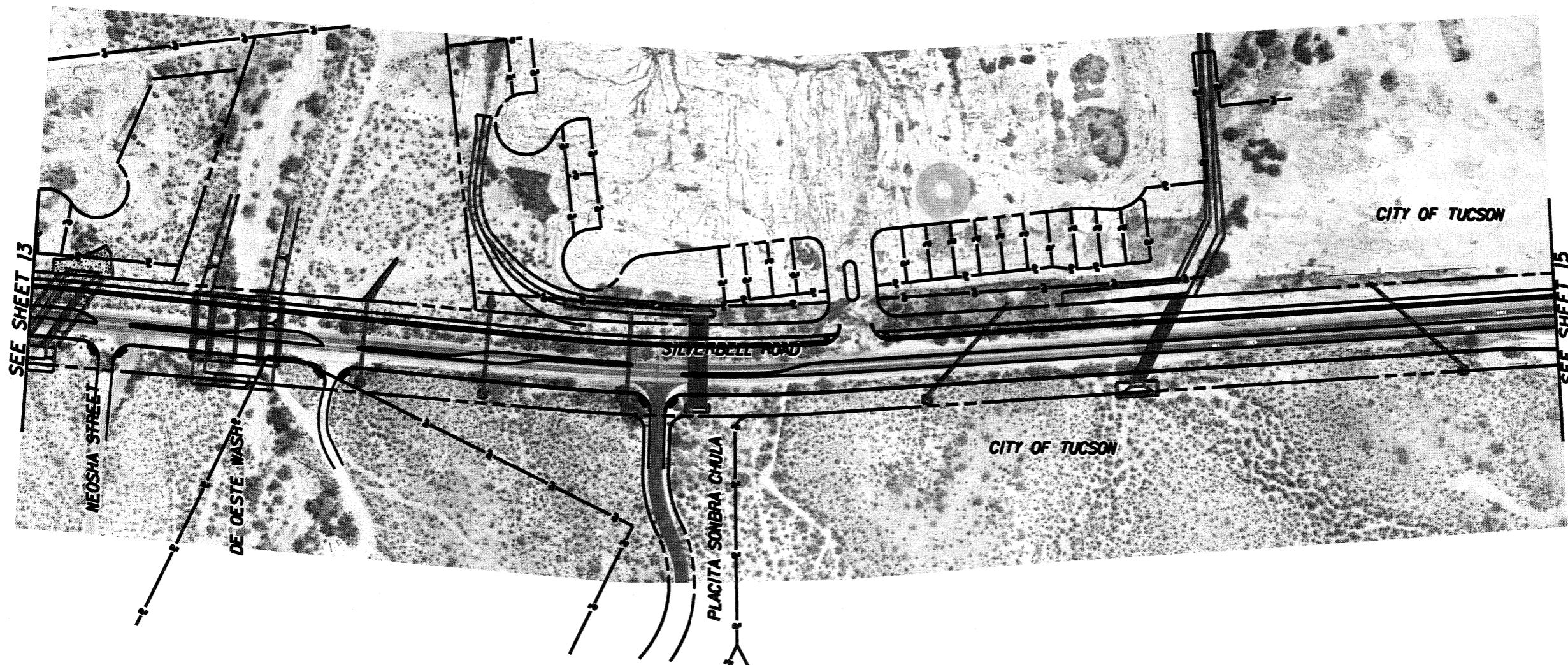
- LEGEND**
- Right of Way
 - |-|-|- Property Line
 - Curb Line/Median
 -  Drainage Structure


2/22/2010
 H:\profile\9589 - Silverbell Road DCR\Public Outreach\Public Sheets\9.42.24 AN\svb-pr-13.dgn

K Kittelson & Associates, Inc.
 33 N. Stone Ave., Suite 800
 Tucson, AZ 85701 (520) 544-4067

NO.	DATE	REVISION	BY	CHKD.	APPR.

PRELIMINARY REVIEW NOT FOR CONSTRUCTION OR RECORDING	ALIGNMENT, ACCESS AND DRAINAGE CROSSINGS		DEPARTMENT OF TRANSPORTATION/ENGINEERING DIVISION	13 OF 17
	SILVERBELL ROAD IMPROVEMNTS INA ROAD TO GRANT ROAD		REF. _____	SCALE: 1" = 100'
	DRWN. BY _____	DESIGN. BY _____	CHKD. BY _____	PLAN NO. _____



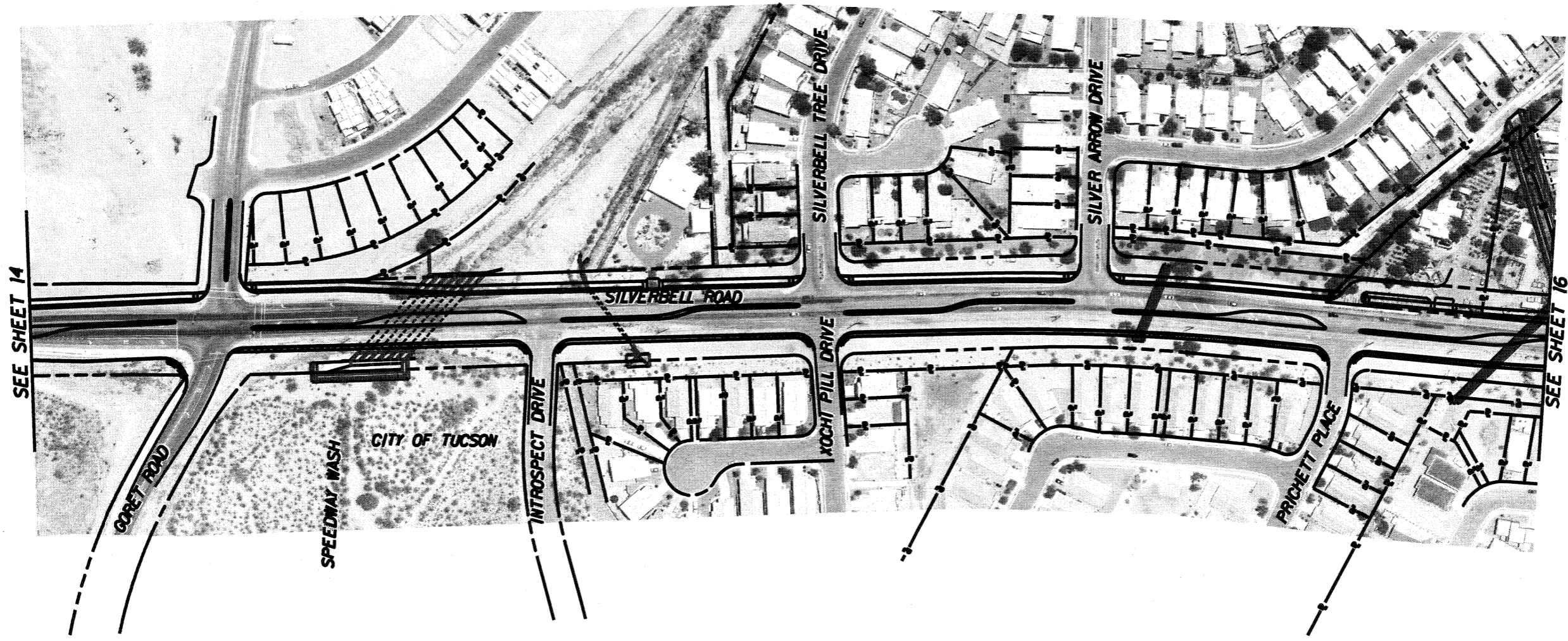
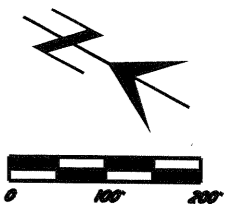
- LEGEND**
- Right of Way
 - |-|- Property Line
 - ==== Curb Line/Median
 -  Drainage Structure

2/22/2018
 H:\projfile\9589 - Silverbell Road DCR\Public Outreach\Public Sheets\9.42.24 AN\svb-pr-14.dgn

K Kittelson & Associates, Inc.
 33 N. Stone Ave., Suite 800
 Tucson, AZ 85701 (520) 544-4067

NO.	DATE	REVISION	BY	CHKD.	APPR.

PRELIMINARY REVIEW NOT FOR CONSTRUCTION OR RECORDING	DEPARTMENT OF TRANSPORTATION/ENGINEERING DIVISION		14
	SILVERBELL ROAD IMPROVEMNTS INA ROAD TO GRANT ROAD		OF
	REF. _____ SCALE: 1" = 100'		17
DRWN. BY _____	CHKD. BY _____	PLAN NO. _____	

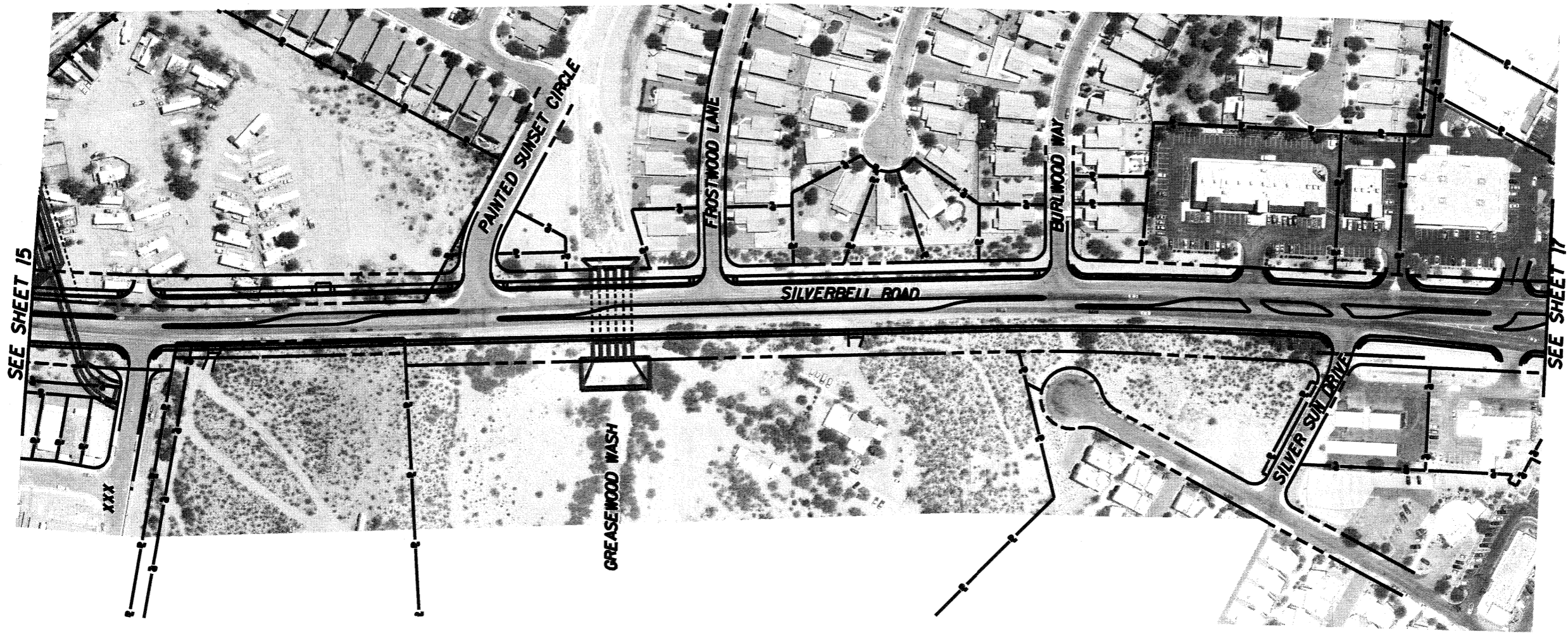
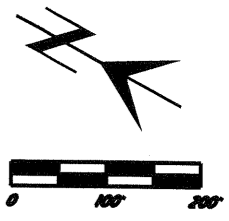






- LEGEND**
- Right of Way
 - |-|-|- Property Line
 - Curb Line/Median
 - Drainage Structure

K Kittelson & Associates, Inc.
 33 N. Stone Ave., Suite 800
 Tucson, AZ 85701 (520) 544-4067

NO.	DATE	REVISION	BY	CHKD.	APPR.

PRELIMINARY REVIEW NOT FOR CONSTRUCTION OR RECORDING	ALIGNMENT, ACCESS AND DRAINAGE CROSSINGS		DEPARTMENT OF TRANSPORTATION/ENGINEERING DIVISION	15 OF 17
	SILVERBELL ROAD IMPROVEMNTS INA ROAD TO GRANT ROAD		REF. _____	SCALE: 1" = 100'
	DRWN. BY _____	DESIGN. BY _____	CHKD. BY _____	PLAN NO. _____



- LEGEND**
-  Right of Way
 -  Property Line
 -  Curb Line/Median
 -  Drainage Structure

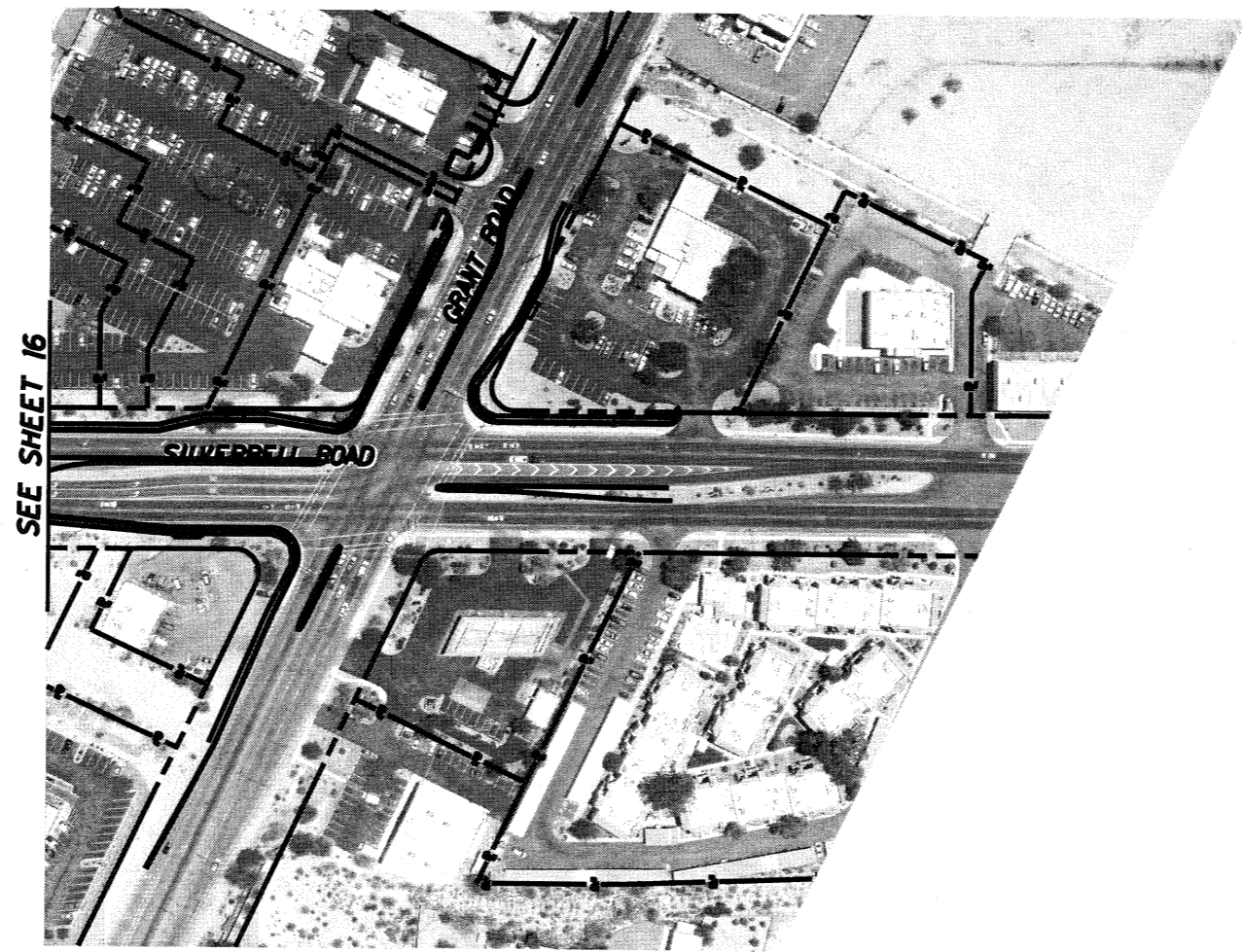
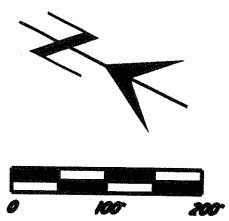
ALIGNMENT, ACCESS AND DRAINAGE CROSSINGS


PRELIMINARY	DEPARTMENT OF TRANSPORTATION/ENGINEERING DIVISION		16
	SILVERBELL ROAD IMPROVEMNTS INA ROAD TO GRANT ROAD		OF 17
	DRWN. BY _____ DSGN. BY _____ CHKD. BY _____	REF. _____ SCALE: 1" = 100' PLAN NO. _____	

K Kittelson & Associates, Inc.
 33 N. Stone Ave., Suite 800
 Tucson, AZ 85701 (520) 544-4067

NO.	DATE	REVISION	BY	CHKD.	APPR.

**REVIEW
NOT FOR
CONSTRUCTION
OR RECORDING**



- LEGEND**
- Right of Way
 - |—|— Property Line
 - Curb Line/Median
 -  Drainage Structure

ALIGNMENT, ACCESS AND DRAINAGE CROSSINGS

PRELIMINARY	DEPARTMENT OF TRANSPORTATION/ENGINEERING DIVISION		17
	SILVERBELL ROAD IMPROVEMNTS INA ROAD TO GRANT ROAD		OF 17
	DRWN. BY		REF. _____ SCALE: 1" = 100'
REVIEW NOT FOR CONSTRUCTION OR RECORDING	DSGN. BY		PLAN NO. _____
	CHKD. BY		

K Kittelson & Associates, Inc.
33 N. Stone Ave., Suite 800
Tucson, AZ 85701 (520) 544-4067

NO.	DATE	REVISION	BY	CHKD.	APPR.